



**Count on it.**

**Parts Catalog**

**eTimeCutter™ 42in  
Riding Mower**

Model No. 75841—Serial No. 416499999 and Up



# Ordering Replacement Parts

To order replacement parts, please supply the part number, the quantity, and the description of each part desired.

## Understanding Reference Numbers

Each identified part in an illustration has a reference number. The reference number for a part also appears in the parts list, along with other information about the part.

This catalog uses two special reference number formats, one to indicate parts in a service assembly and another to indicate the quantity of a given part in an illustration.

## Service Assembly Reference Numbers

Parts in service assemblies have reference numbers in the form a:b. The a represents the reference number of the entire service assembly and the b represents a sequential number unique to each part within the service assembly.

For example, a wheel assembly might be identified by reference number 6, the tire by 6:1, the valve by 6:2, and the wheel by 6:3. When you order the assembly identified by reference number 6, you receive all parts identified by reference numbers 6:1, 6:2, and 6:3. However, you may also order any part individually. Reference numbers of this type appear in illustration and in parts lists.

## Reference Numbers Indicating Quantity

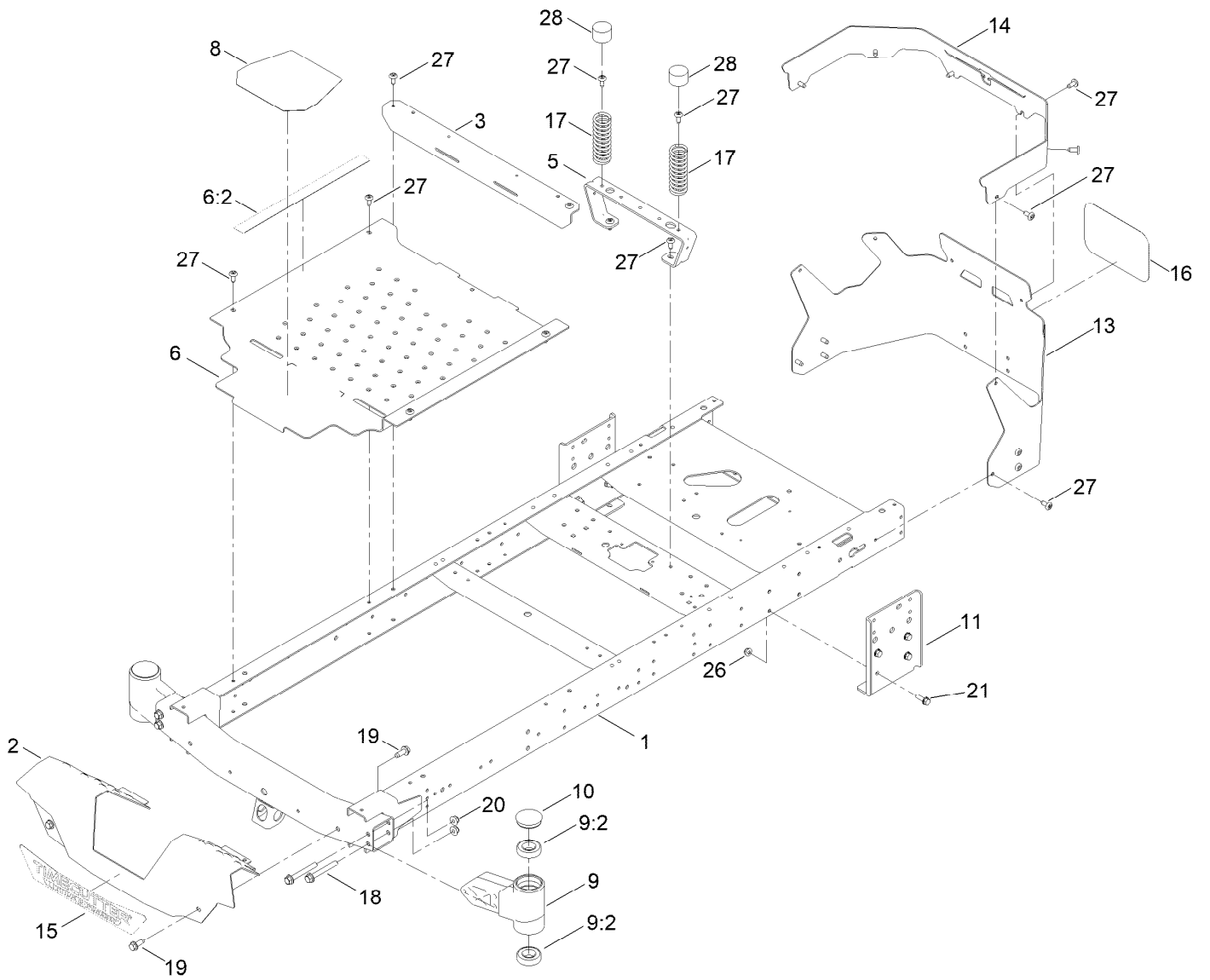
In an illustration, if a reference number indicates more than one part, the reference number has the form nX y. The n represents the quantity of the part, the X is the multiplication symbol, and the y represents the reference number.

For example, in an illustration, the reference number 2X 37 means that two of the parts identified by reference number 37 are indicated.

# Contents

Frame Assembly	4
Decklift Assembly	6
Caster Wheel Assembly	8
Traction Drive Assembly	10
Electric Transaxle Assembly No. 161-4488	12
Brake Assembly	14
Rear Tire Assembly	16
Seat Assembly	18
Motion Control Assembly	20
Battery Box Assembly	22
Battery Box Assembly No. 161-4483	24
Pod Assembly	26
Electrical Assembly	28
42 Inch Deck and Decal Assembly	30
Attachments and Accessories	32

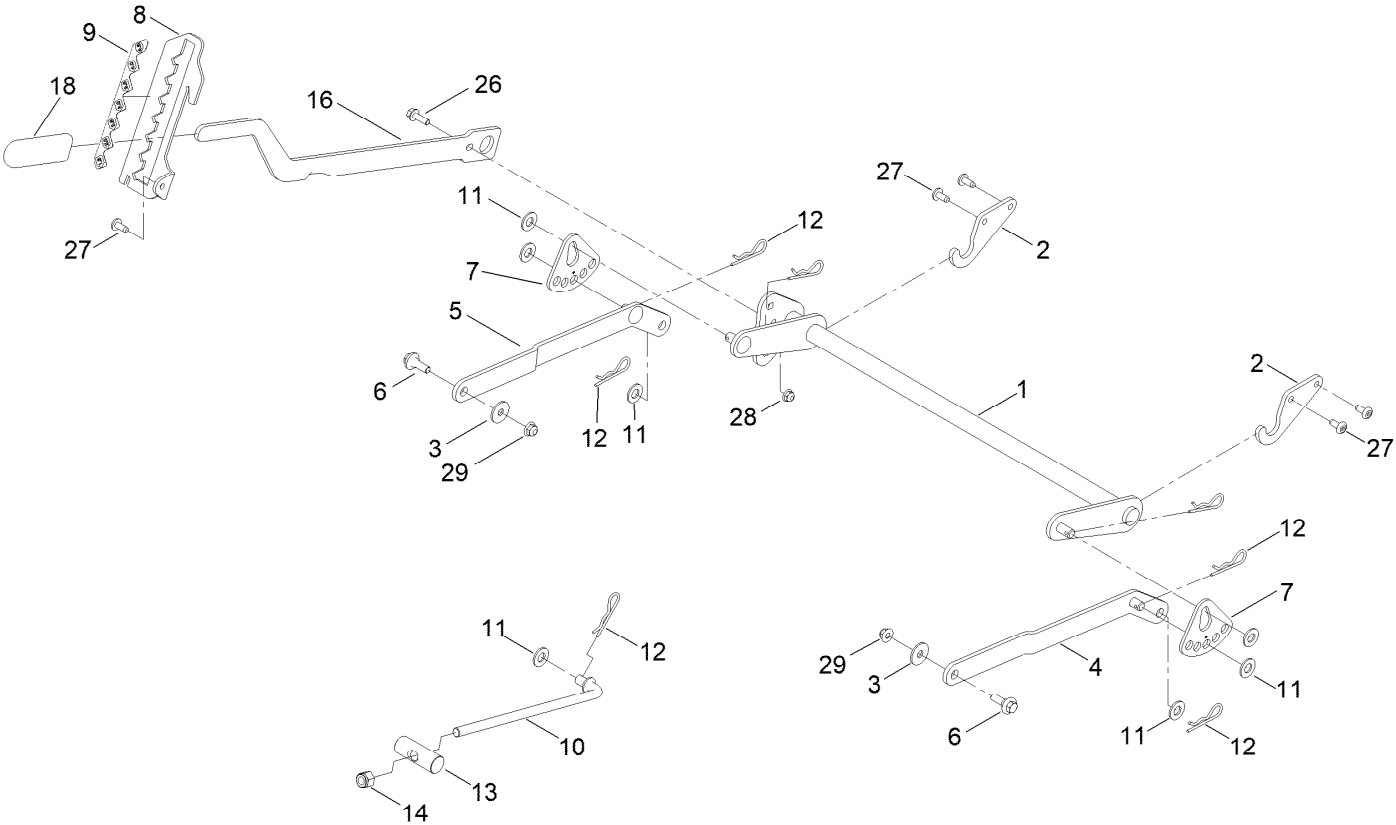
# Frame Assembly



## Frame Assembly (continued)

<i>Ref.</i>	<i>Part Number</i>	<i>Qty.</i>	<i>Description</i>	<i>Ref.</i>	<i>Part Number</i>	<i>Qty.</i>	<i>Description</i>
1	147-3005-01	1	Frame ASM [red]	14	147-7579-01	1	Guard-Rear, Upper
2	138-9827-07	1	Footrest	15	147-8705	1	Decal-Timecutter
3	138-9791-01	1	Brace-Cross	16	145-1978	1	Decal-Logo, Silver
5	138-6036-03	1	Support-Seat	17	138-2548	2	Spring-Compression
6	161-4457	1	Pan-Floor ASM	18	139-2429	4	Screw-HHF
6:2	147-7617	1	Decal - Warning	19	139-2428	4	Screw-HWH
8	139-3220	1	Tread-Step	20	139-2430	4	Nut-HF, NI
9	140-2098	2	Axle Stub ASM	21	139-2596	8	Screw-HHF
9:2	109-3678	2	Bearing-Ball	26	119-4041	8	Nut-HF
10	138-7200	2	Cap-Grease	27	138-9753	22	Screw
11	145-0415-01	2	Plate-Mount, Drive	28	701178	2	Cap-Protector
13	147-5205-07	1	Guard-Rear				

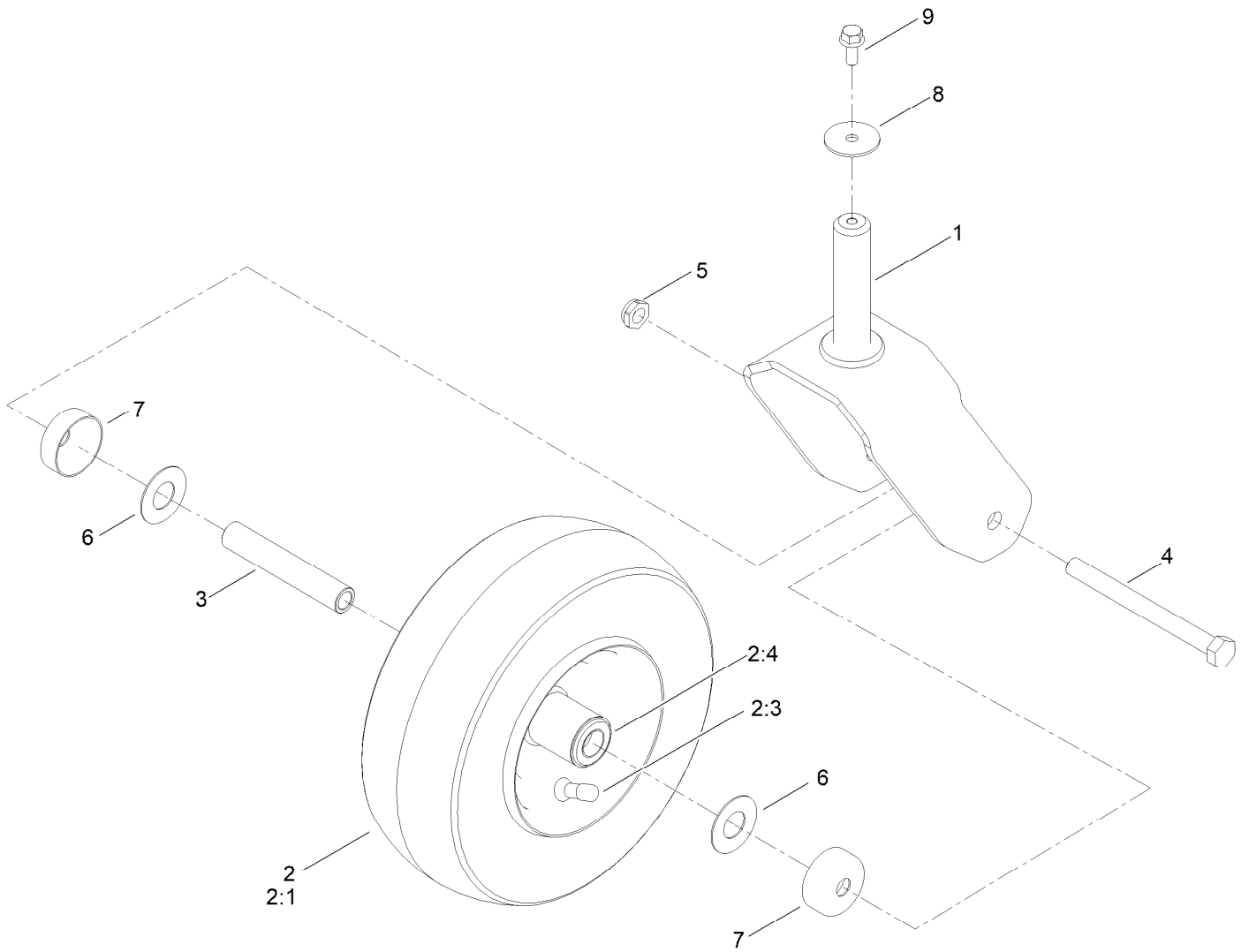
# Decklift Assembly



## Decklift Assembly (continued)

<i>Ref.</i>	<i>Part Number</i>	<i>Qty.</i>	<i>Description</i>	<i>Ref.</i>	<i>Part Number</i>	<i>Qty.</i>	<i>Description</i>
1	137-7093-03	1	Deck Lift ASM	11	139-2611	7	Washer-Flat
2	138-6021	2	Bracket-Pivot, Decklift	12	139-2562	7	Pin-Hair
3	140-5063	2	Washer-Hardened, Cz	13	119-8810	1	Pin-Pivot
4	137-9844	1	LH Arm ASM	14	139-1725	1	Nut-Hex
5	137-9846	1	RH Arm ASM	16	137-7087-03	1	Lever-Lift
6	137-9847	2	Screw-Shoulder	18	1-633268	1	Grip-Lever
7	138-2564	2	Plate-Adjustment, HOC	26	139-2596	1	Screw-HHF
8	139-2350-01	1	Bracket-HOC	27	138-9753	5	Screw
9	139-2392	1	Decal-HOC	28	119-4041	1	Nut-HF
10	138-6050	1	Rod-Mount, Deck	29	119-4042	2	Nut-HF, NI

# Caster Wheel Assembly



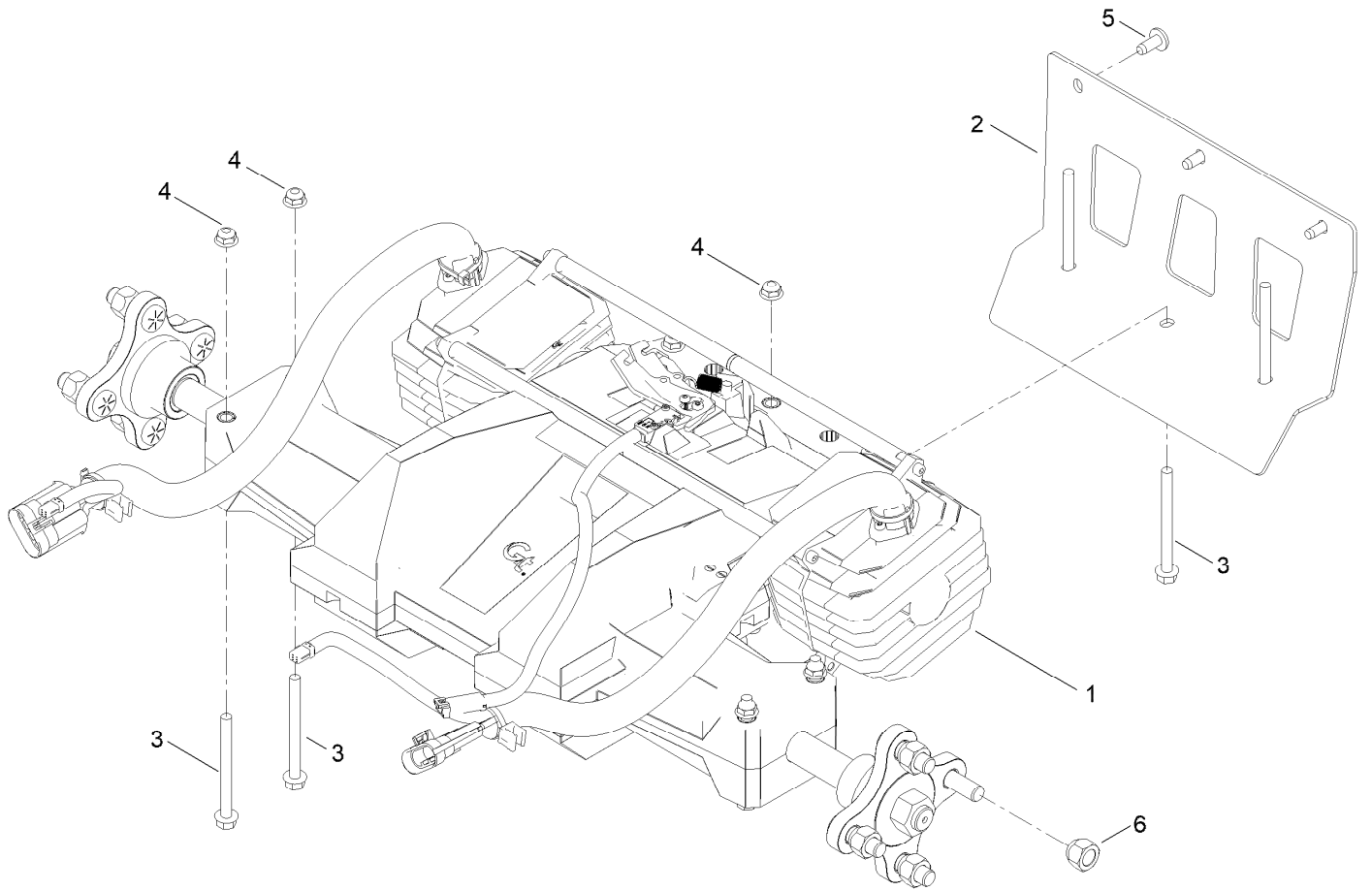


## Caster Wheel Assembly (continued)

<i>Ref.</i>	<i>Part Number</i>	<i>Qty.</i>	<i>Description</i>	<i>Ref.</i>	<i>Part Number</i>	<i>Qty.</i>	<i>Description</i>
1	139-3274-01	2	Fork ASM	4	139-2607	2	Screw-HH
2	147-5203	2	Tire ASM	5	139-2617	2	Nut-Lock, NI
2:1	147-2936	1	Tire	6	136-5590	4	Washer
2:3	232-27	1	Stem-Valve	7	138-7208	4	Guard-Seal
2:4	136-4190	2	Bearing	8	115-1151	2	Washer-Flat
2:99	105-0844	1	Tube-Inner ●	9	139-2598	2	Screw-HHF
3	147-7593	2	Spacer-Spanner				

● Not illustrated

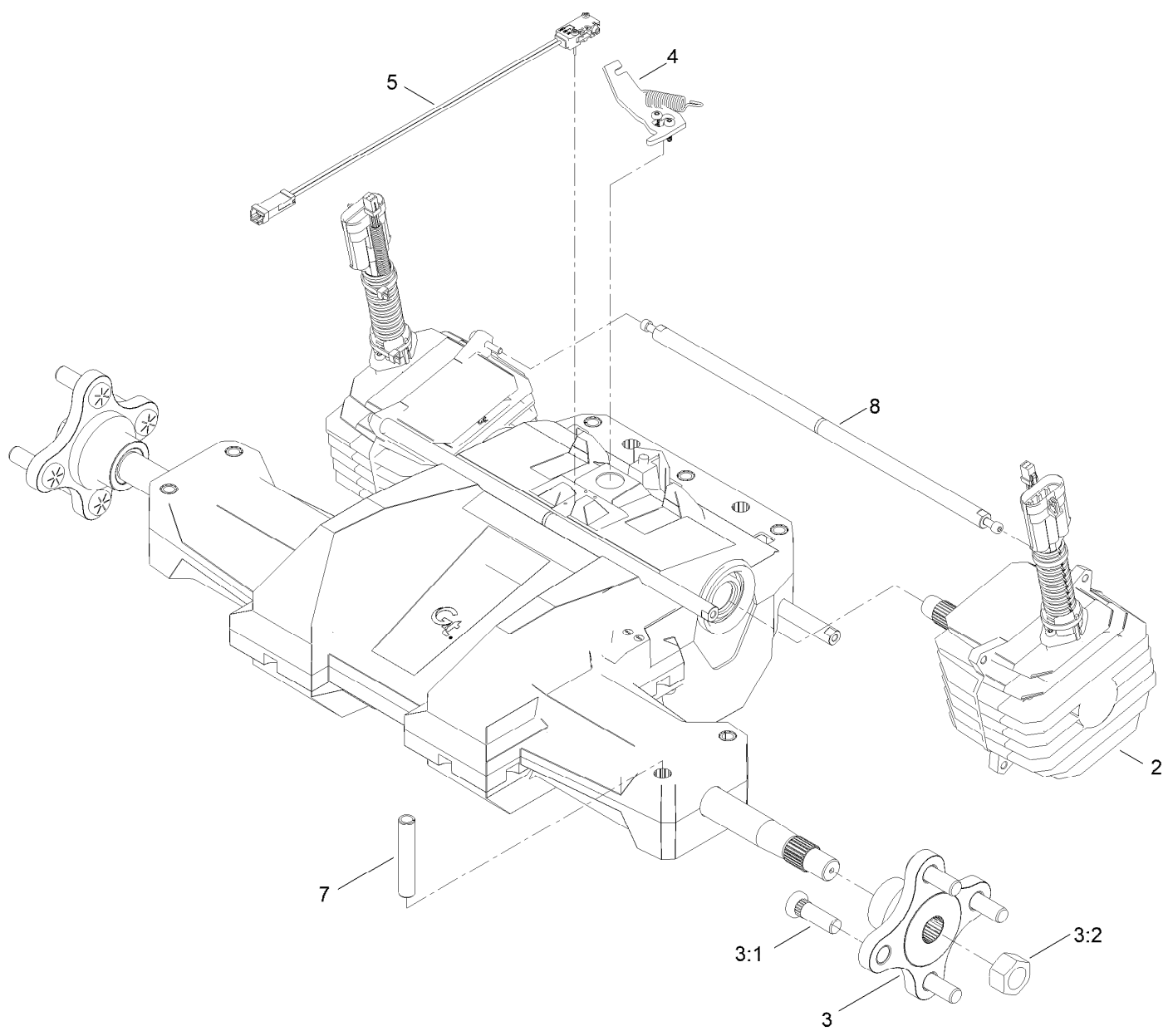
# Traction Drive Assembly



## Traction Drive Assembly (continued)

<i>Ref.</i>	<i>Part Number</i>	<i>Qty.</i>	<i>Description</i>	<i>Ref.</i>	<i>Part Number</i>	<i>Qty.</i>	<i>Description</i>
1	161-4488	1	Transaxle-Electric, 18"	4	119-4041	7	Nut-HF
2	144-5335-01	1	Bracket-Transmission	5	138-9753	3	Screw
3	147-5202	7	Screw-HH	6	139-2564	8	Nut-Lug

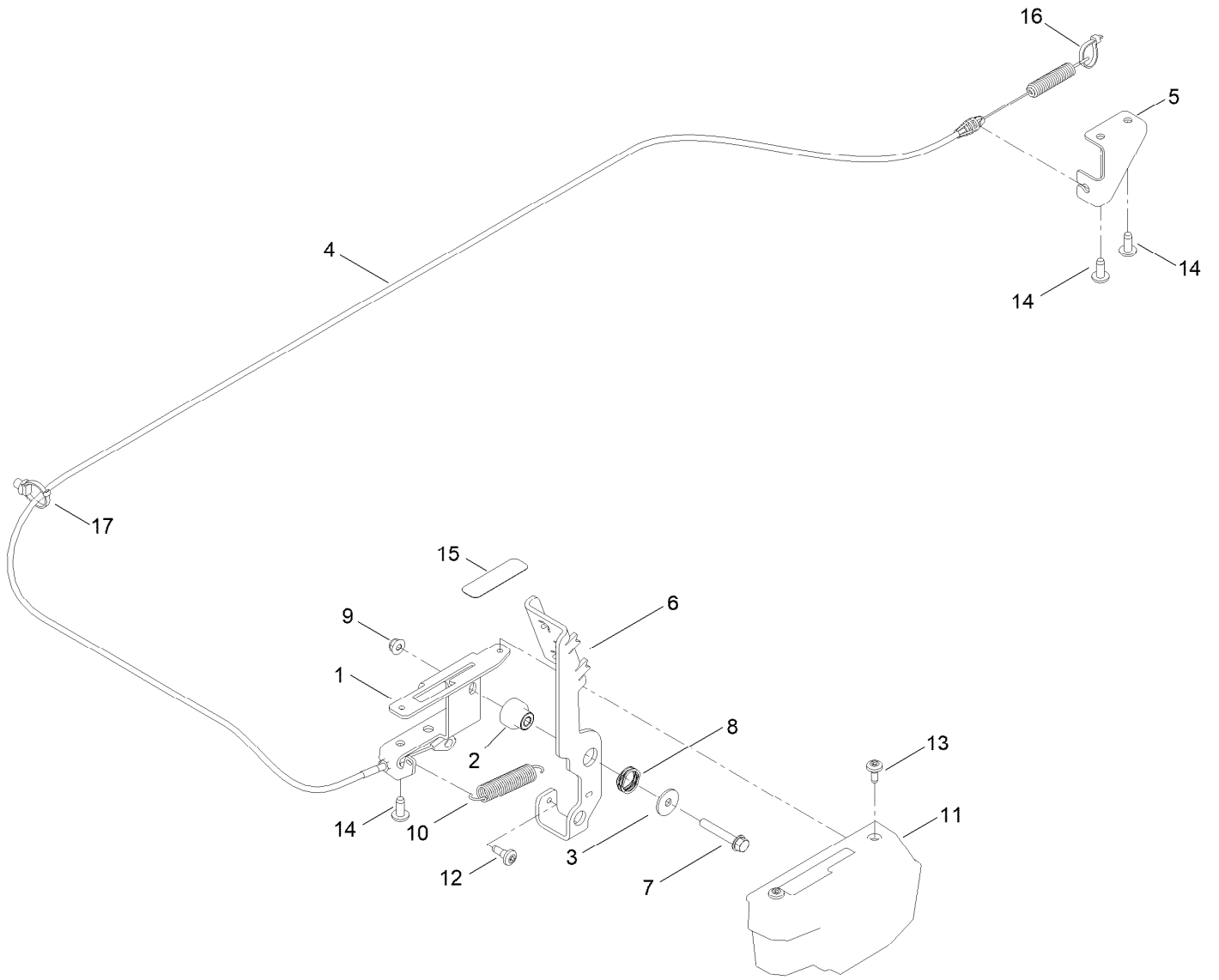
# Electric Transaxle Assembly No. 161-4488



# Electric Transaxle Assembly No. 161-4488 (continued)

<i>Ref.</i>	<i>Part Number</i>	<i>Qty.</i>	<i>Description</i>	<i>Ref.</i>	<i>Part Number</i>	<i>Qty.</i>	<i>Description</i>
2	161-4490	2	Motor ASM	4	161-4493	1	Arm-Brake ASM
3	161-4491	2	Wheel Hub ASM	5	161-4494	1	Switch-Brake ASM
3:1	161-4492	4	Stud-Wheel	7	161-4496	7	Spacer
3:2	161-4647	1	Nut-Hub	8	161-4497	3	Rod-Cross

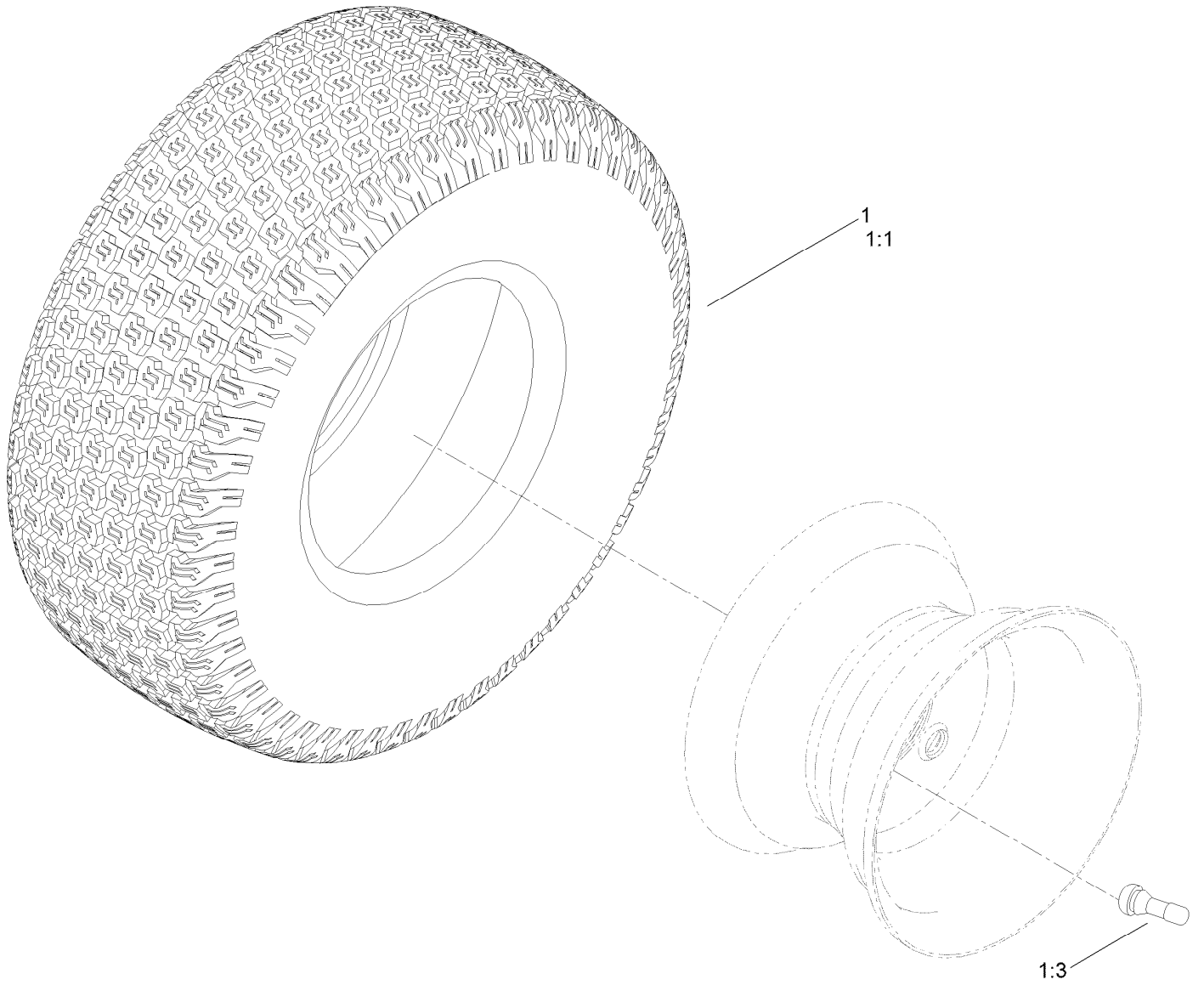
# Brake Assembly



## Brake Assembly (continued)

<i>Ref.</i>	<i>Part Number</i>	<i>Qty.</i>	<i>Description</i>	<i>Ref.</i>	<i>Part Number</i>	<i>Qty.</i>	<i>Description</i>
1	147-5182-03	1	Bracket-Pedal, Brake	10	137-7040	1	Spring-Return, Pedal
2	147-7741	1	Bushing-Flange	11	147-3048	1	Cover-Brake, Parking
3	5-4460	1	Washer-Pivot	12	135-2015	1	Screw-Shoulder
4	145-0490	1	Cable-Brake	13	120-7950	2	Screw-Torx
5	147-5201-03	1	Bracket-Cable, Brake	14	138-9753	3	Screw
6	147-5181-03	1	Pedal-Brake	15	139-1271	1	Decal-Brake, Parking
7	142-6275	1	Screw-HHF	16	3290-378	1	Tie-Cable
8	120-5116	1	Washer-Wave	17	32180-030	1	Clip-Tie
9	119-4041	1	Nut-HF				

# Rear Tire Assembly



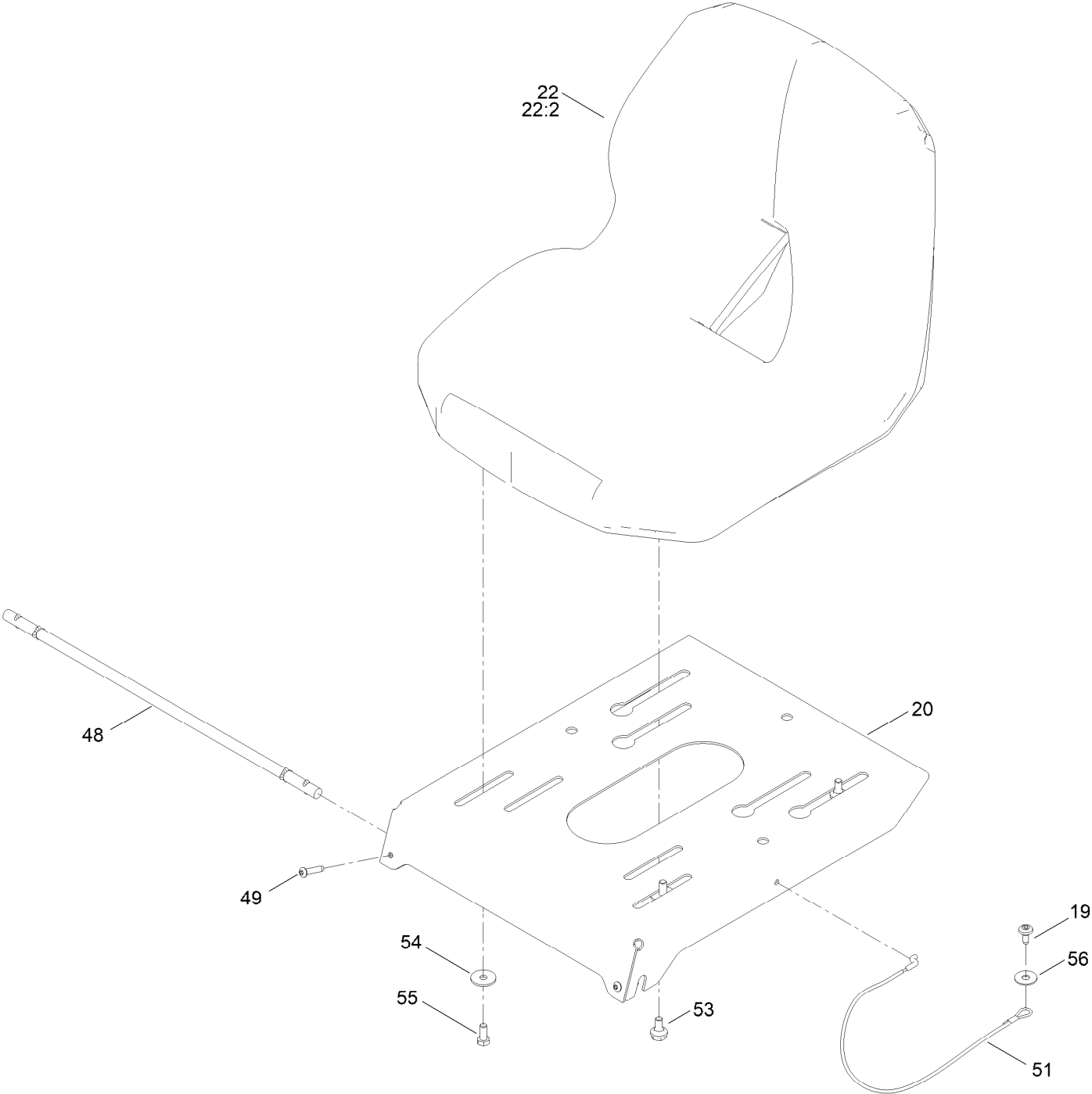


## Rear Tire Assembly (continued)

<i>Ref.</i>	<i>Part Number</i>	<i>Qty.</i>	<i>Description</i>	<i>Ref.</i>	<i>Part Number</i>	<i>Qty.</i>	<i>Description</i>
1	139-5846	2	Tire ASM	1:3	232-27	1	Stem-Valve
1:1	126-1618	1	Tire	1:99	107-2491	1	Tube-Tire ●

● Not illustrated

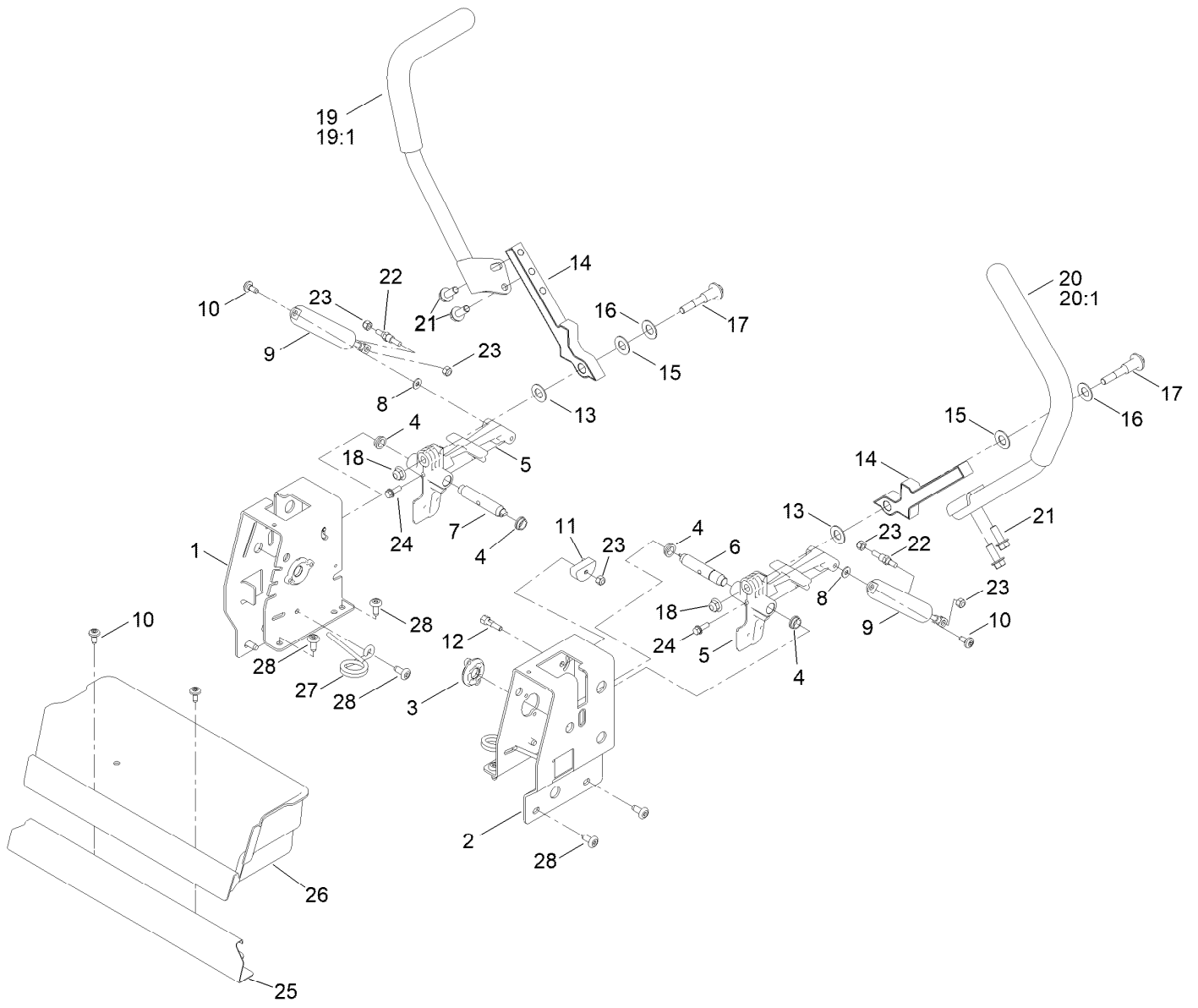
# Seat Assembly



## Seat Assembly (continued)

<i>Ref.</i>	<i>Part Number</i>	<i>Qty.</i>	<i>Description</i>	<i>Ref.</i>	<i>Part Number</i>	<i>Qty.</i>	<i>Description</i>
19	120-7950	1	Screw-Torx	51	139-2398	1	Cable-Lanyard
20	138-9781-03	1	Pan-Seat	53	37-8771	2	Bolt-Shoulder, HF
22	147-7744	1	Seat-16 In	54	5-4460	2	Washer-Pivot
22:2	82-2190	1	Switch-Bail	55	137-3052	2	Screw-HH
48	138-7555	1	Rod-Pivot	56	147-5287	1	Washer-Flat
49	137-3010	2	Screw-BHCS				

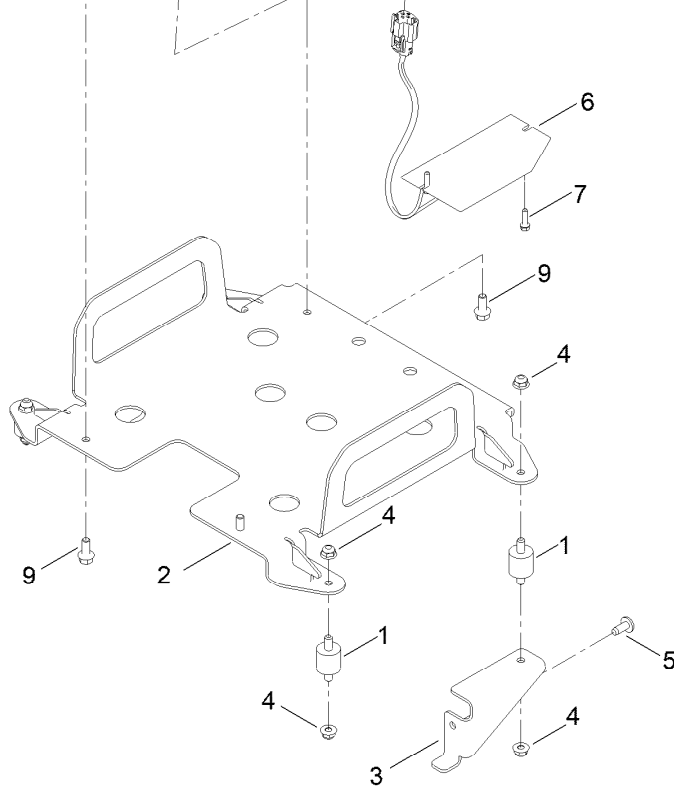
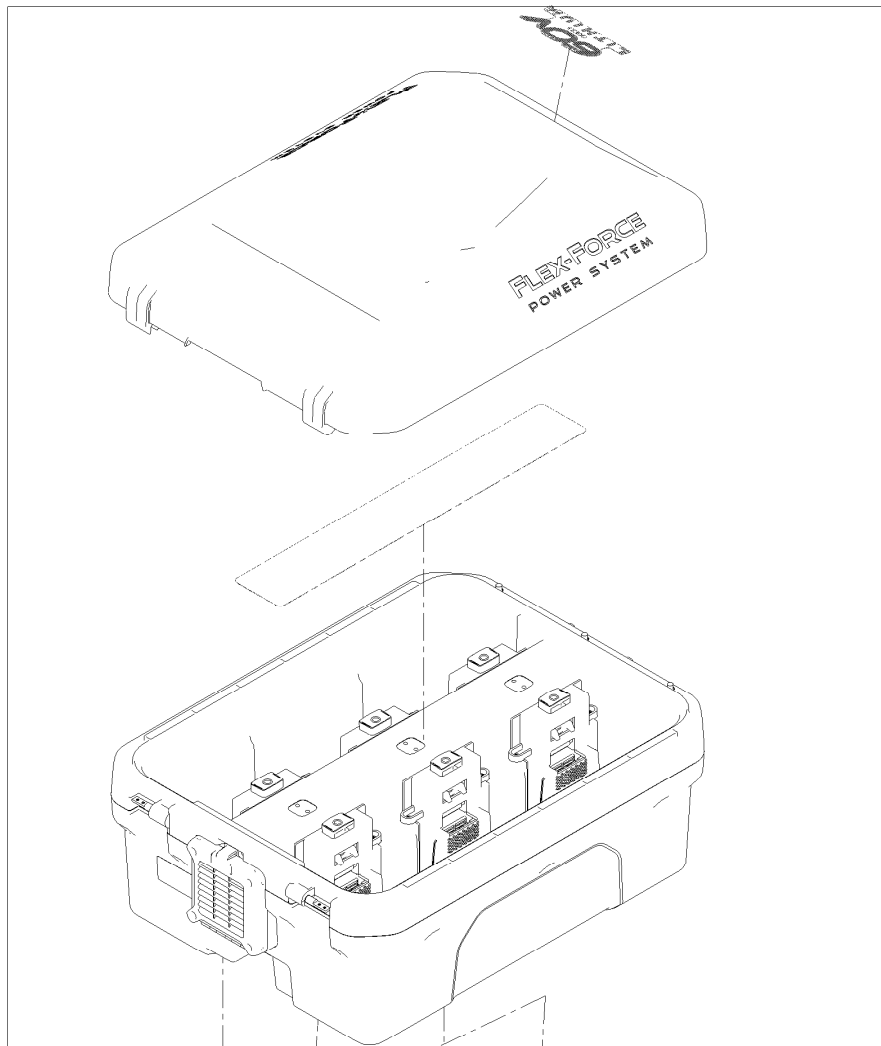
# Motion Control Assembly



## Motion Control Assembly (continued)

<i>Ref.</i>	<i>Part Number</i>	<i>Qty.</i>	<i>Description</i>	<i>Ref.</i>	<i>Part Number</i>	<i>Qty.</i>	<i>Description</i>
1	140-8322-03	1	Plate-Control Box, RH	16	119-8925	2	Washer-Belleville
2	140-8342-03	1	Plate-Control Box, LH	17	139-2556	2	Bolt-Pivot
3	147-7552	2	Spacer-Sensor	18	119-4042	2	Nut-HF, NI
4	147-7551	4	Bushing-Flange	19	133-7057	1	Handle-Control, RH
5	147-2903	2	Arm-Actuator	19:1	121-0726	1	Grip
6	147-3009	1	Pin-Lever Pivot, LH	20	133-7055	1	Handle-Control, LH
7	147-3010	1	Pin-Lever Pivot, RH	20:1	121-0726	1	Grip
8	119-8952	2	Washer	21	139-2597	4	Screw-HHF
9	132-6853	2	Damper-Non Cavitating	22	138-7215	2	Stud-Damper
10	120-7950	4	Screw-Torx	23	137-3088	6	Nut-Hex
11	139-5803	2	Eccentric	24	119-1138	2	Screw-HHF
12	139-5811	2	Bolt-Pivot, Eccentric	25	139-3280-01	1	Plate-Kick
13	120-2273	2	Washer-Nylon	26	145-0421	1	Box-Storage
14	133-9299-05	2	Arm-Control	27	138-7539	2	Spring-Torsion
15	117-1240	2	Washer	28	138-9753	10	Screw

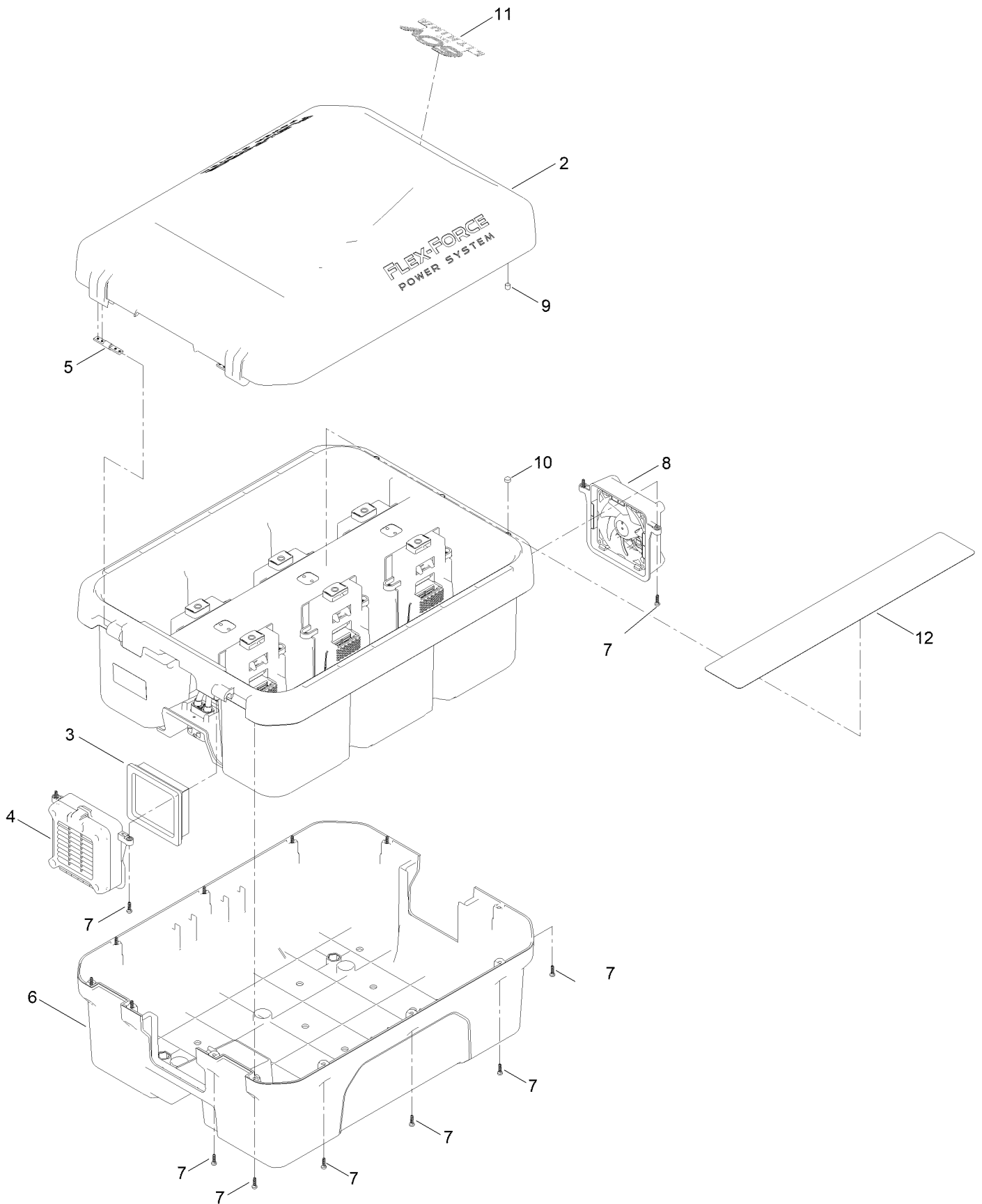
# Battery Box Assembly



## Battery Box Assembly (continued)

<i>Ref.</i>	<i>Part Number</i>	<i>Qty.</i>	<i>Description</i>	<i>Ref.</i>	<i>Part Number</i>	<i>Qty.</i>	<i>Description</i>
1	147-7605	4	Isolator-1 In OD (5/16-18)	6	147-2192	1	Resistor-Regen
2	161-4468-01	1	Battery Mount ASM [red]	7	145-6922	2	Screw-HWH Thd Roll Zct+w
3	147-7672-03	2	Mount-Box, Rear	8	161-4483	1	Box-Battery, ASM
4	119-4041	8	Nut-HF	9	139-2598	4	Screw-HHF
5	138-9753	2	Screw				

# Battery Box Assembly No. 161-4483

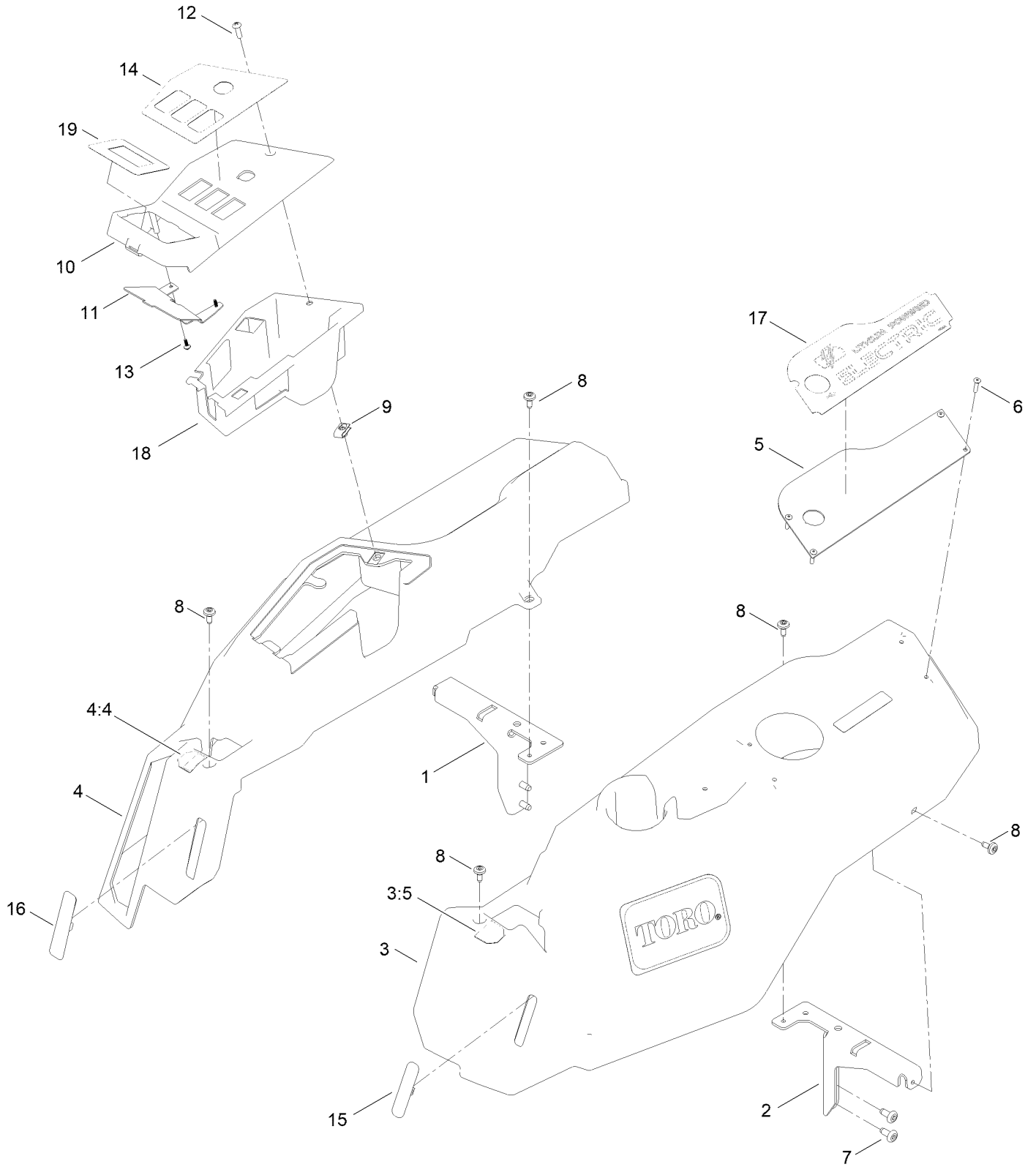




## Battery Box Assembly No. 161-4483 (continued)

<i>Ref.</i>	<i>Part Number</i>	<i>Qty.</i>	<i>Description</i>	<i>Ref.</i>	<i>Part Number</i>	<i>Qty.</i>	<i>Description</i>
2	147-5348	1	Cover-Box, Battery	8	161-4487	1	Fan-ASM
3	147-5345	1	Filter-Air	9	161-4645	3	Magnet-Lid, Battery Box
4	147-5344	1	Housing-Filter	10	161-4646	3	Magnet-Base, Battery Box
5	161-4648	2	Hinge-Box ASM, Battery	11	147-4208	1	Decal-60V, Lithium
6	147-5342	1	Box-Battery, Outer	12	147-7621	1	Decal-Lithium
7	161-4486	16	Screw-Plastic 4Mmx14MM, Globe				

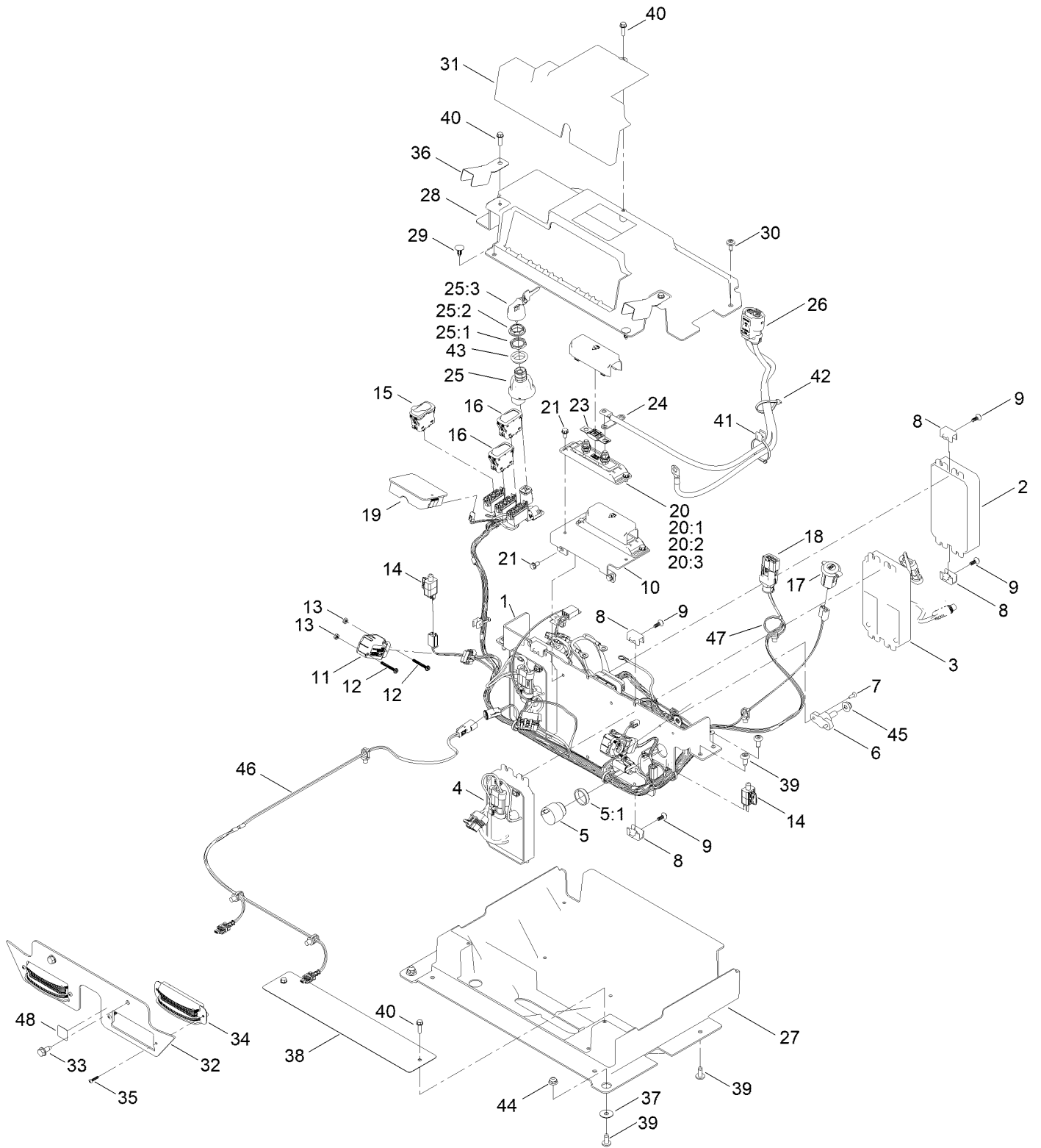
# Pod Assembly



## Pod Assembly (continued)

<i>Ref.</i>	<i>Part Number</i>	<i>Qty.</i>	<i>Description</i>	<i>Ref.</i>	<i>Part Number</i>	<i>Qty.</i>	<i>Description</i>
1	138-6070-03	1	Support-Pod, RH	10	147-7576	1	Pod-Control
2	138-6071-03	1	Support-Pod, LH	11	147-7577-03	1	Cover-Console
3	145-0501	1	Pod-LH	12	3258-166	1	Screw-PRH
3:5	147-7620	1	Decal - Control Lever, LH	13	145-5837	2	Screw-Plastic,Tbfh
4	147-8768	1	Pod-RH	14	147-7614	1	Decal-Panel, Control
4:4	147-7619	1	Decal - Control Lever, RH	15	147-7629	1	Plug-Pod, LH
5	145-0502-03	1	Plate-Cover, Pod	16	147-7691	1	Plug-Sc
6	130-8451	4	Rivet-Trifold	17	147-7641	1	Decal-60V Lithium
7	138-9753	4	Screw	18	147-7666	1	Cover-Switch
8	120-7950	6	Screw-Torx	19	147-7715	1	Decal-Gt Display
9	107069	1	Clip				

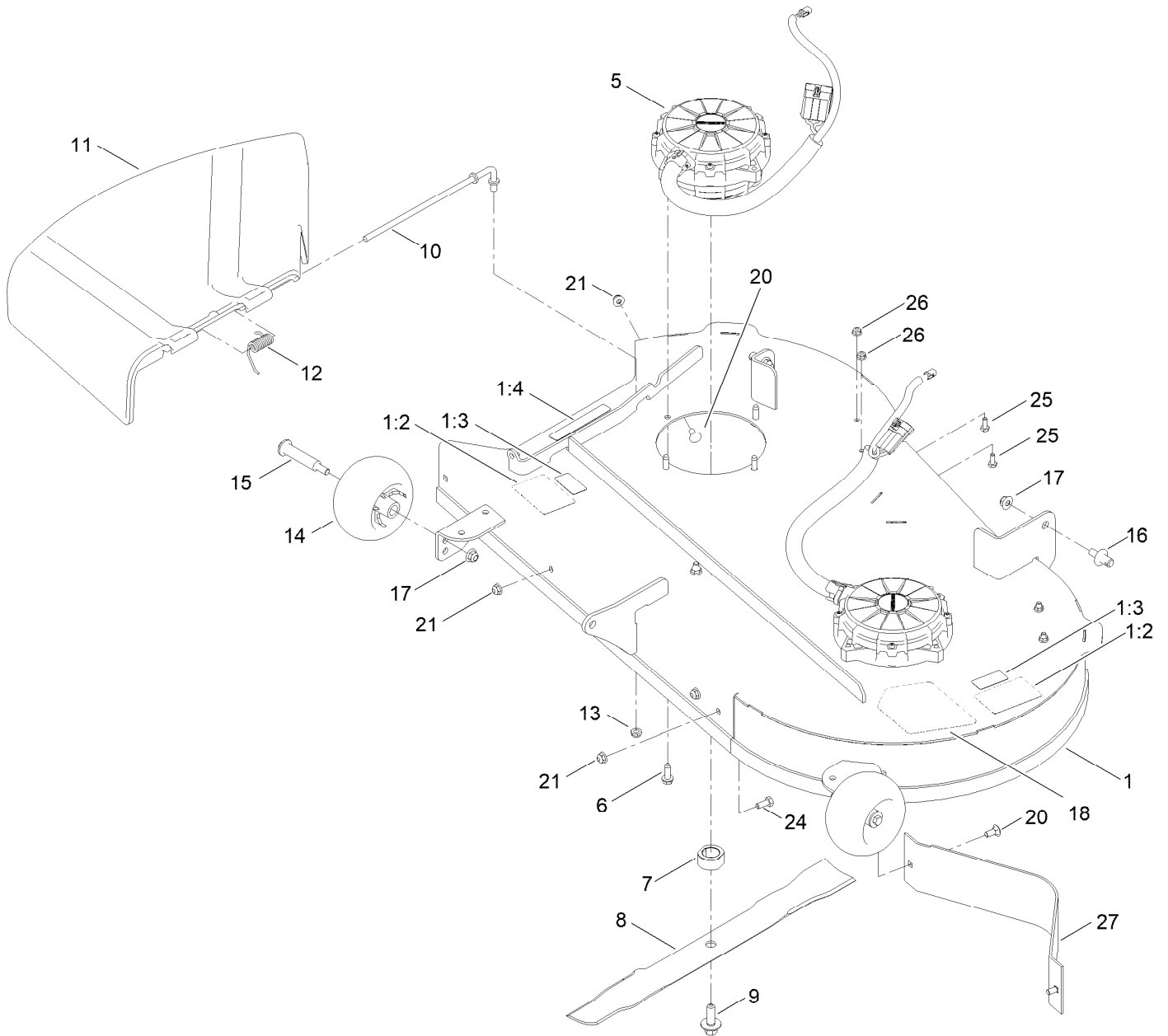
# Electrical Assembly



## Electrical Assembly (continued)

<i>Ref.</i>	<i>Part Number</i>	<i>Qty.</i>	<i>Description</i>	<i>Ref.</i>	<i>Part Number</i>	<i>Qty.</i>	<i>Description</i>
1	147-7667-03	1	Mount-Controllers	25	122-2513	1	Switch-Ignition, Suns
2	147-7631	1	Controller-Master	25:1	121-5160	1	Nut-Hex
3	147-7635	2	Controller-Traction	25:2	122-2704	1	Nut-Face, M22 (Plastic)
4	147-7633	2	Controller-Deck	25:3	121-5162	1	Set-Key, Ignition
5	80-9330	1	Audio Alarm ASM	26	147-7584	1	Harness-Wire, Power Cable
5:1	104-5107	1	Nut-Plastic, Knurled	27	147-7668	1	Cover-Bottom
6	110-8823	1	Block-Junction	28	147-7670	1	Cover-Controller
7	105-6849	2	Screw-Forming, Thread	29	117-2382	2	Plug-Plastic
8	145-0586	6	Clip-Controller	30	120-7950	2	Screw-Torx
9	138-5775	6	Screw-Delta Point	31	147-7680	1	Cover-Outer
10	147-5200-03	1	Mount-Holder, Fuse	32	139-7488-01	1	Mount-Head Lights
11	140-8373	2	Sensor	33	32144-70	2	Screw-HWHTF
12	147-7729	4	Screw-HWH	34	139-5825	2	ASM-Light,LED
13	147-7730	4	Nut-Hex NI	35	94-4496	4	Screw-PPH
14	110-6765	2	Switch	36	147-7681-03	2	Cover-Sensor
15	139-6368	1	Switch-Rocker, On-None-On	37	108-4925	2	Washer
16	145-0467	2	Switch-Rocker On- None- On	38	147-7719-03	1	Cover-Wire
17	140-7955	1	Port-Power, USB	39	138-9753	8	Screw
18	139-6393	1	Harness-Wire, 2 Blade Main	40	137-3099	5	Screw-Plastite, HWH
19	147-2198	1	Display	41	32180-078	1	Clip-Edge
20	161-6249	2	Holder-Fuse	42	3290-378	1	Tie-Cable
20:1	136-8682	4	Washer-Lock	43	145-7110	1	Adapter-Switch, Key
20:2	3256-74	8	Washer-Flat	44	119-4041	2	Nut-HF
20:3	117-4059	4	Nut-Hex	45	119-4042	1	Nut-HF, NI
21	32144-4	6	Screw-HWH	46	147-8762	1	Harness-Wire, LED Lights
23	122-2559	2	Fuse-100 Amp	47	32180-030	1	Clip-Tie
24	147-5340	1	Busbar-2, Switch	48	147-0290	1	Decal-Light, Warning

# 42 Inch Deck and Decal Assembly



## 42 Inch Deck and Decal Assembly (continued)

<i>Ref.</i>	<i>Part Number</i>	<i>Qty.</i>	<i>Description</i>	<i>Ref.</i>	<i>Part Number</i>	<i>Qty.</i>	<i>Description</i>
1	147-7654	1	42 In Deck And Decal ASM	13	121-4600	1	Nut-Hex
1:2	147-7615	2	Decal-Danger, Deck	14	1-603299	2	Roller-Scalp, Anti
1:3	137-8127	2	Decal-No Spray	15	139-2551	2	Bolt-Shoulder
1:4	130-0731	1	Decal-Danger	16	139-5871	2	Pin-Deck
5	140-8379	2	Motor-Deck	17	119-4042	4	Nut-HF, NI
6	136-7174	8	Screw-Thd Roll, HWH	18	147-7562	1	Decal-Iron Forged, 42
7	140-8361	2	Driver-Blade	20	139-2630	3	Bolt-CARR
8	144-1948-03	2	Blade-21.60 In, Combination	21	119-4041	5	Nut-HF
9	145-0411	2	Bolt-Blade, Sems	24	137-3052	2	Screw-HH
10	137-2019	1	Rod-Pivot	25	137-3041	4	Screw-HH
11	138-7502	1	Deflector-Discharge	26	119-4040	4	Nut-HF, NI
12	138-7268	1	Spring-Torsion	27	161-6305-03	1	Deflector-42"

# Attachments and Accessories

## For 75841 eTimeCutter 42in Riding Mower

<b>Product Name</b>	<b>Model/Part</b>
60V Battery 2.0 AH .....	88620
60V LI-ION Battery 2.5 AH.....	88625
60V LI-ION, Battery 4.0 AH .....	88640
60V LI-ION Battery 5.0 AH.....	88650
60V LI-ION Battery 6.0 AH.....	88660
60V LI-ION Battery 7.5 AH.....	88675
60V LI-ION Battery 10.0 AH .....	66810
60V Six Pod Battery Charger 12 AMP .....	66550
60V Battery Charger 2 AMP .....	88602
60V Rapid Battery Charger 5.4 AMP .....	88605
Bagger .....	79841
42in Recycler Kit, TimeCutter 4275 Riding Mower .....	161-4519
42 Inch Bagging Enhancement Kit.....	161-4521
42 Inch Striping Kit.....	161-4523
Rops Kit .....	79682
Slope Sensor Kit, Zero-Turn-Radius Riding Mower .....	79681
Deck Footlift Assist Kit .....	161-4527
Floormat Kit .....	161-4528
Armrest Kit.....	140-2058
Storage Cover .....	490-7516
Seat Cover W/O Arm Rest - TC 18in.....	117-0096
Kit-Caster Wheel .....	161-4530
Power Clear 21in 60V Self-PPL (BT) .....	39921T
60V Cordless Blower (Bare Tool).....	51820T
60V Cordless Trimmer (Bare Tool).....	51830T
60v 24in Max Hedge Trimmer (Bare Tool).....	51840T
16in 60V Max Chainsaw (Bare Tool).....	51850T
21in Stripe WPM Push Bare Tool.....	21611T



**Notes:**

**Notes:**

**Notes:**



**Count on it.**